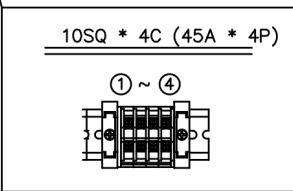
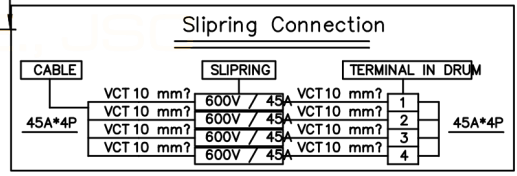
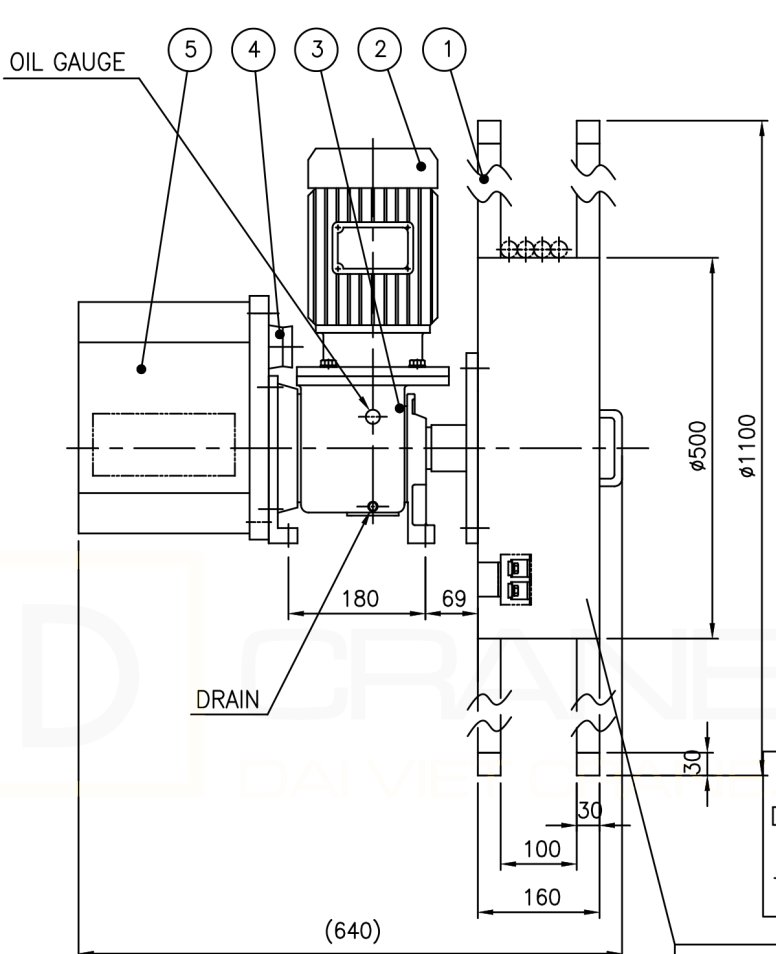
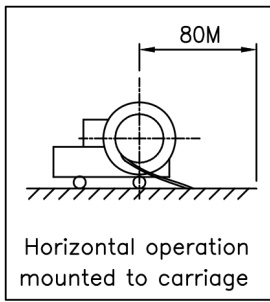
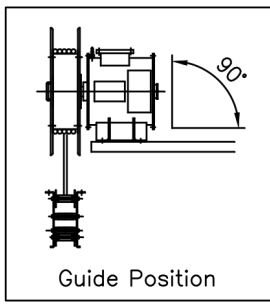
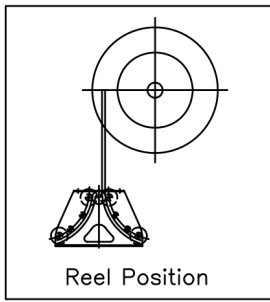


1		2		3		4		5		6	
표준	1000	500	200	100	50	20	10	5	2.5	1.25	0.625
1000	500	200	100	50	20	10	5	2.5	1.25	0.625	0.3125

MARK	REASONABLE REVISIONS	DATE	DRAWN	APPR'D
△	ISSUED FOR PROPOSAL	'17.05.11	P.S.Y	



SPECIFICATION

- | | | | |
|-------------------|------------------------------|-----------------------|--------------------------------------|
| 1. Cable | o Spec. : PNCT 10SQ X 4C | 5. Slip Ring | : 45A X 4P |
| | o Size : approx. ϕ 21.9 | 6. Motor Power Source | : AC 380V, 3PH, 50HZ |
| | o Weight : approx. 0.83 kg/m | 7. Paint Color | : MUNSELL NO. 7.5 BG6/1.5 (OUT DOOR) |
| | o Length : 90 M | 8. Setting Height | : MAX. 1.0 M from G.L. |
| 2. Winding Length | : 80 M | 9. Q'ty | : 1 Set |
| 3. Winding Speed | : max. 15 M/MIN | | |
| 4. Winding Torque | : 2 Kg.m | | |

5	-	SLIP RING	SPHC	-	-
4	-	CONNECTOR	-	-	-
3	-	REDUCER	-	-	-
2	-	MOTOR	SIEMENS	-	0.75KW * 6P
1	-	DRUM	SUS304	1	-

ITEM	PART NO.	PART NAME	MATERIAL	Q'ty	REMARKS
PROJECTION	3rd ANGLE	DIMENSION UNIT	SCALE	MODEL SF1-1090-4	
CUSTOMER	VNID	PART NAME	ASS'Y		
MODEL COLOR	M/N.O. 7.5BG 6/1.5	PART NO.	Z880-4000	REV. NO.	
DRAWING	DESIGN	CHECK	APPROVAL		
SIGN	P.S.Y			KOREEL KOREEL CO., Ltd.	
DATE	2017.05.11				